

UP TO 100% MORE  
PANELS PER ROOF

VAN DER VALK



ValkDouble  
ValkTriple  
ValkQuattro



The ValkDouble, ValkTriple and ValkQuattro of Van der Valk Solar Systems are practical and universal solar mounting systems developed specifically for use on 'unusual' flat roofs, such as extension roofs or shed roofs, garages or apartment buildings.

These systems in the shape of a ramp are ideal in places that are not big enough to accommodate a number of rows of the 'standard' Flat Roof System or create unwanted shading. Due to the smart configuration of the system, up to 100 % more panels per roof can be placed!

### Communal features

The ValkDouble, ValkTriple and ValkQuattro share the following key characteristics:

- ✓ Up to 100% more panels per roof
- ✓ Universal mid- and end-panel clamps (H 28-50 mm)
- ✓ Low height due to small fixed tilt angle of 10°
- ✓ Supplied as a ready-to-use kit
- ✓ Developed according to Eurocode standards

### ValkDouble

Unique to this system:

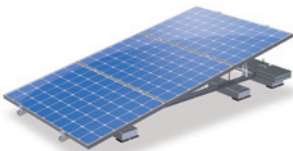
- ✓ Landscape configuration with two panels
- ✓ Ideal for extension roofs or shed roofs



### ValkTriple

Unique to this system:

- ✓ Landscape configuration with three panels
- ✓ Ideal for garages



### ValkQuattro

Unique to this system:

- ✓ Landscape configuration with four panels
- ✓ Ideal for apartment buildings



**solosolar**

BERATUNG, VERKAUF  
& INSTALLATION VON  
SOLARANLAGEN

SoloSolar GmbH  
Türliackerstrasse 15  
8304 Wallisellen  
044 830 50 50  
www.solosolar.ch

## Applications Ramp Systems

The **ValkDouble**, **ValkTriple** and **ValkQuattro** of Van der Valk Solar Systems are suitable for 'unusual' flat roofs, such as extension roofs or shed roofs, garages or apartment buildings. All materials used are of the highest quality. The system is quick and easy to install.

The compact box containing all the needed materials include a clear installation manual and a ballast overview supplemented with regional and building height variables. This allows you to quickly determine the correct weighting. The weight of the mass blocks is already incorporated in the ballast calculation. Depending on the total weight required, you may have to add additional ballast. Fixation to the roof is also possible by using consoles, which are available separately.

### Glass panels

As well as the standard solar panels with a frame, solar panels without a frame can also be mounted using glass clamps.

	ValkDouble	ValkTriple	ValkQuattro
Recommended pitch (Based on sun angle of 14,5°)	3300 mm	5000 mm	6700 mm

*This lists the pitch we recommend for the distance between the rows to minimise shading and optimise efficiency.*



### Van der Valk Solar Systems develops and produces solar mounting systems for:



Pitched Roofs   Flat Roofs   Open fields   Greenhouses   Water features

**VAN DER VALK**



## WHY VAN DER VALK SOLAR SYSTEMS?

- Innovative systems developed in compliance with applicable worldwide standards
- Fast and reliable deliveries due to modern machinery and large stocks
- System supplier since 1963
- Free software for project design and calculation
- All systems applicable to any type of roof or surface
- Quick assembly due to premounting of essential components
- All systems available in portrait as well as landscape configuration
- Various systems also available as ready-to-use kits



The mounting systems of Van der Valk Solar Systems are delivered and installed by an extensive network of dealers and installers. We would be happy to help you find your closest point of contact.

**solo solar**

**SoloSolar GmbH**  
**Türliackerstrasse 15**  
**8304 Wallisellen**  
**044 830 50 50**  
**www.solosolar.ch**

**BERATUNG, VERKAUF**  
**& INSTALLATION VON**  
**SOLARANLAGEN**

PLEASE CONTACT VAN DER VALK SOLAR SYSTEMS,  
 YOUR DEALER OR INSTALLER FOR FULL INFORMATION.